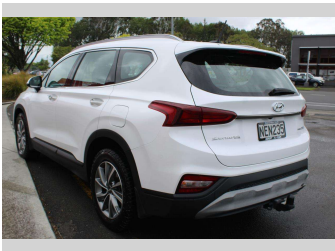


2020 Hyundai SANTA FE 2.2D CRDI 7S



Purchase Price

\$21,990

Includes GST, Registration & Licensing

Indicative repayments

\$124.58 per week*

Based on a 48 month term & 10% deposit.
Total repayments (208) = \$28,110.98

Gain peace of mind with
Mechanical Breakdown
Insurance. **Ask us how.**

Top features

» 4x4

» 7 Seater

» ABS Braking

» Adaptive cruise control

» Air Conditioning

» Alloy Wheels

» Bluetooth

» CD Player

» Climate Air Conditioni...

» Electric Windows

» Face Lift Model

» Front, Side and Curtai...

» NZ New

» Parking Sensors

» Power Steering

» Remote Locking

» Reversing Camera

» Tinted Windows

Body Style

5 door, SUV / 4x4

Odometer

201,000 km

Engine

2200 cc

Fuel Type

Diesel

Transmission

Auto, AWD

Wheels

18"

VIN

KMHS281CSLU313891

Interior

Charcoal

Safety

Based on 2018 ANCAP rating
for 18-24 models

Reg No.

NEN235

Ext Colour

White

History

NZ New

Seats

7 seats, Cloth

CO2 Emissions

★ ★ ★ ☆ ☆ ☆
228 grams/km

Energy Economy

★ ★ ☆ ☆ ☆ ☆
Annual fuel cost of \$3,470
8.6L per 100km

Cost per year is an estimate based
on diesel price of \$2.00 per litre and
an average distance of 14000 km.
Includes Road User Charges (RUC).
Emissions and Energy Economy
figures standardised to 3P WLTP.

Stock ID: 5368

Adopt-A-Car

Adopt a Car | Phone 0272887933 | Email sales@adoptacar.co.nz
989b Kairanga Bunnythorpe Road, Kairanga, Palmerston North 4475, New Zealand
www.adoptacar.co.nz

4.65 | 354 reviews

* Adopt a Car is not a lender nor a financial adviser. Any amounts displayed should not be seen as an offer of finance or taken as financial advice. The interest rate, fees and loan term used in this calculation may not actually represent those available from lenders. Actual interest rates, fees and loan terms will vary per lender and are typically based on an assessment of your credit risk and responsible lending criteria. Any repayment amounts displayed are indicative only and have been calculated using several other indicative inputs. The interest rate used in this calculation is an arbitrary 12.95%, however exact interest rates vary per lender. The term of the loan used in this calculation is 48 months. Exact terms available vary per lender although options typically include 6, 12, 18, 24, 36, 48 and 60 months. This calculation also includes a typical mandatory fee charged by lenders. This is a one-off establishment fee of \$350.00. Typically, this fee can be paid upfront or, as in this calculation, be capitalised over the contract term, ie. included in the loan amount. This fee can vary per lender and other non-mandatory fees and charges may also apply. The total amount of repayments has been calculated by multiplying 208 weekly repayments (based on a 48 month term) by the weekly repayment amount of \$124.58 which equals \$28,110.98. This calculator does not consider any of your own personal circumstances and we strongly suggest you seek budgeting advice prior to committing to any loan contract. Responsible lending criteria and lender terms and conditions will likely apply to any finalised loan contract. Proof of security and/or vehicle insurance may also be required before proceeding.