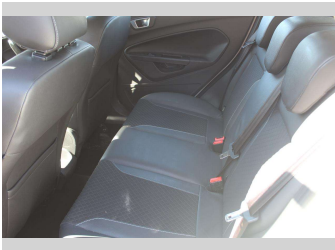
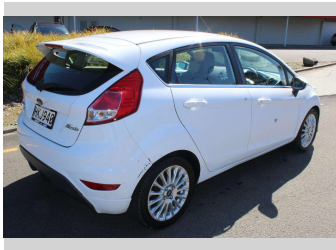


2014 Ford Fiesta sport



Purchase Price

Includes GST, Registration & Licensing

\$9,990

Indicative repayments

\$57.78 per week*

Based on a 48 month term & 10% deposit.
Total repayments (208) = **\$13,016.47**

MARAC

Gain peace of mind with
Mechanical Breakdown
Insurance. **Ask us how.**



ASSURANT®

Top features

- » 5 Seater
- » ABS Braking
- » Air Conditioning
- » Alloy Wheels
- » Bluetooth
- » Body Kit (Factory)
- » Central Locking
- » Climate Air Conditioni...
- » Cruise Control
- » Dual Airbags
- » Electric Windows
- » NZ New
- » Power Steering
- » Remote Locking
- » Traction Control

Body Style

5 door, Hatch

Odometer

92,000 km

Engine

990 cc

Fuel Type

Petrol

Transmission

Auto, 2WD

Wheels

16"

VIN

MNB8XXARJ8ES26927

Interior

Black, Leather/Cloth

Safety



Based on 2024 UCSR rating
for 09-18 models

Reg No.

HKJ940

Ext Colour

White

History

NZ New

Seats

5 seats

CO2 Emissions

★★★★☆

134 grams/km

Energy Economy

★★★★☆☆

Annual fuel cost of \$2,310

5.9L per 100km

Cost per year is an estimate based
on petrol price of \$2.80 per litre and
an average distance of 14000 km.
Emissions and Energy Economy
figures standardised to 3P WLTP.

Stock ID: 5475

Adopt-A-Car

Adopt a Car | Phone 0272887933 | Email sales@adoptacar.co.nz
989b Kairanga Bunnythorpe Road, Kairanga, Palmerston North 4475, New Zealand
www.adoptacar.co.nz



★★★★★
4.65 | 360 reviews

* Adopt a Car is not a lender nor a financial adviser. Any amounts displayed should not be seen as an offer of finance or taken as financial advice. The interest rate, fees and loan term used in this calculation may not actually represent those available from lenders. Actual interest rates, fees and loan terms will vary per lender and are typically based on an assessment of your credit risk and responsible lending criteria. Any repayment amounts displayed are indicative only and have been calculated using several other indicative inputs. The interest rate used in this calculation is an arbitrary 12.95%, however exact interest rates vary per lender. The term of the loan used in this calculation is 48 months. Exact terms available vary per lender although options typically include 6, 12, 18, 24, 36, 48 and 60 months. This calculation also includes a typical mandatory fee charged by lenders. This is a one-off establishment fee of \$350.00. Typically, this fee can be paid upfront or, as in this calculation, be capitalised over the contract term, ie. included in the loan amount. This fee can vary per lender and other non-mandatory fees and charges may also apply. The total amount of repayments has been calculated by multiplying 208 weekly repayments (based on a 48 month term) by the weekly repayment amount of \$57.78 which equals \$13,016.47. This calculator does not consider any of your own personal circumstances and we strongly suggest you seek budgeting advice prior to committing to any loan contract. Responsible lending criteria and lender terms and conditions will likely apply to any finalised loan contract. Proof of security and/or vehicle insurance may also be required before proceeding.